

## **Historic, archived document**

Do not assume content reflects current scientific knowledge, policies, or practices.



1934

OCTOBER, 1934

TREE — FLOWER — SHRUB

# SEED

FOR THE NURSERY

WE ARE CASH BUYERS  
OF THE FOLLOWING SEED

ACER dasycarpum, Silver Maple  
FAGUS americana, American Beech  
HICORIA alba, Mockernut  
HICORIA glabra, Pignut  
HICORIA ovata, Shellbark Hickory  
HICORIA pecan, Pecan  
LIQUIDAMBER styraciflua, Sweetgum  
LIRIODENDRON tulipifera, Tulip Poplar  
NYSSA sylvatica, Tupelo  
PINUS echinata, Shortleaf Pine  
PINUS taeda, Loblolly Pine  
PRUNUS americana, American Plum  
PRUNUS serotina, Black Cherry  
PRUNUS tomentosum, Nanking Cherry  
QUERCUS alba, White Oak  
QUERCUS borealis  
QUERCUS palustris, Pin Oak  
QUERCUS rubra, Red Oak  
QUERCUS velutina, Black Oak  
ROBINIA pseudoacacia, Black Locust

*Send samples, advise quantity available and price.  
Quote other kinds also.*

---

---

## HERBST BROTHERS, INC.

Agents for T. Sakata & Co., Japan

92 Warren St.

New York, N. Y.

Printed in U. S. A.

## Terms

This list cancels all previous offers.

*Disclaimer:* We give for ourselves or our Principals no warranty, express or implied, as to the description, quality or productiveness, or in any other respect for the seed we deliver, nor will we be responsible for the crop in any way. In no case shall we or our Principals be held liable for more than the invoice value of the seed sold.

*Prices*—are f.o.b. New York (excepting nursery stock).

*Weights*—net, packing extra at cost.

*Payment:* Our prices are calculated on a strictly cash basis; customers remitting with their orders will be allowed 5% discount. When remitting please add for postage and packing.

Minimum charge for any one item 25 cents.

Seed of Oriental origin is offered for account of Messrs. T. Sakata & Co., Japan's Leading Seedsmen. As their representatives in the United States and Canada you will always find us prepared to quote and assist you in locating seed originating in the Far East.

---

## TREE AND SHRUB SEEDS

	¼ lb.	lb.
<b>ABIES</b>		
amabilis, Cascade Fir .....	\$ .60	\$2.00
arizonica, Cork Fir .....	. . .	. . .
balsamea, Balsam Fir .....	.75	2.50
cephalonica, Greek Fir .....	.40	1.25
cilicica, Sicilian Fir .....	.55	1.80
concolor, White Fir (Colo.) .....	.40	1.25
concolor, White Fir (Calif.) .....	.50	1.50
fraseri, Fraser Fir .....	1.20	4.00
grandis, Great Silver Fir .....	.60	2.00
holophylla, Needle Fir .....	.50	1.60
homolepis (brachyphylla), Nikko Fir .....	.50	1.60
lasiocarpa, Alpine Fir .....	.90	3.00
magnifica, Red Fir .....	.75	2.50
nobilis, Noble Fir .....	.60	2.00
nordmanniana, Nordmann Fir .....	.55	1.75
numidica, Algerian Fir .....	.60	1.90
pectinata, Silver Fir .....	.25	.75
pinsapo glauca, Spanish Fir .....	1.25	4.00
pinsapo glauca, Blue Spanish Fir .....	1.25	4.00
sibirica, Siberian Fir .....	.75	2.50
veitchi, Veitch Fir .....	.55	1.70

---

*Order Early This Year*

---

**TREE AND SHRUB SEEDS**

	¼ lb.	lb.
<b>ACER</b>		
dasyarpum, Silver Maple .....	ask for prices	
palatum atropurpureum dissectum, Threadleaf Red Maple .....	4.00	12.00
pennsylvanicum, Striped Maple .....	.50	1.65
platanoides, Norway Maple .....	.25	.55
platanoides schwedleri, Schwedler Maple .....	.35	1.10
pseudoplatanus, Sycamore Maple .....	.25	.55
saccharum, Sugar Maple .....	.50	1.50
<b>ACTINIDIA</b>		
arguta, Bower Actinidia, C.S. ....	1.20	4.20
<b>AESCULUS</b>		
glabra, Ohio Buckeye .....	...	.25
hippocastanum, Horsechestnut .....	...	.25
hippocastanum rubicunda, Red Horsechestnut....	...	.40
octranda, Yellow Buckeye .....	...	.25
<b>ALNUS</b>		
glutinosa, European Alder .....	.25	.70
incana, Speckled Alder .....	.25	.85
viridis, European Green Alder .....	.30	.95
<b>AMELANCHIER</b>		
alnifolia, Saskatoon .....	.65	2.20
<b>AMORPHA</b>		
canescens, Leadplant .....	.65	2.10
fruticosa, Indigobush .....	.40	1.20
<b>AMPELOPSIS</b>		
quinquefolia, Virginia Creeper, C.S. ....	.35	1.10
tricuspidata, (Veitchi), Japanese Creeper, C.S....	.50	1.65
<b>ARCTOSTAPHYLOS</b>		
uva-ursi, Bearberry .....	.80	2.75
<b>ARONIA</b>		
arbutifolia, Red Chokeberry, C.S. ....	.65	2.00
melanocarpa, Black Chokeberry, D.B. ....	.30	1.00
<b>ASIMINA</b>		
triloba, Pawpaw .....	.30	.95
<b>AZALEA</b>		
arborescens, Sweet Azalea, pods....	\$1.00 per oz.	
calendulacea, Flame Azalea, pods.	\$1.25 per ¼ lb.	
canescens, Piedmont Azalea, C.S....	2.25 per oz.	
komiyamea (New) .....	\$1.00 pkt. \$10.00 per oz.	
nudiflora, Pinxterbloom, C.S.....	\$1.65 per oz.	
occidentalis, Western Azalea, C.S...	1.50 per oz.	
pentaphylla, Fiveleaf Azalea .....	3.00 per oz.	
pontica, Pontic Azalea, C.S.....	2.50 per oz.	
schlippenbachi, Royal Azalea, C.S...	1.50 per oz.	
vaseyi, Pinkshell Azalea, C.S.....	1.25 per oz.	
viscosa, Swamp Azalea, pods.....	.75 per oz.	
<b>BENZOIN</b>		
aestivale, Spicebush, D.B. ....	.25	.85
<b>BERBERIS</b>		
wilsonae, Wilson Barberry .....	1.00	3.50
<b>BETULA</b>		
alba, European White Birch (re-cleaned).....	.30	1.00
alba pendula, European Weeping Birch .....	.25	.80
lenta, Sweet Birch .....	.35	1.25
lutea, Yellow Birch .....	.50	1.60
nigra, River Birch .....	.65	2.25
papyrifera, Canoe Birch .....	.45	1.50
populifolia, Gray Birch .....	.45	1.50
<b>BIGNONIA</b>		
grandiflora, Chinese Trumpetreeper .....	2.75	10.00
radicans, Trumpetreeper .....	.65	2.25

---

*Order Early This Year*

---

**TREE AND SHRUB SEEDS**

	¼ lb.	lb.
<b>BROUSSONETIA</b>		
<i>papyrifera</i> , Paper-Mulberry .....	1.00	3.50
<b>BUDDLEIA</b>		
<i>davidi</i> , Orange-eye Butterflybush, C.S. ....	.90	3.10
<i>japonica</i> , hardy, sky-blue flowering, C.S.....	3.00	7.50
<b>BUXUS</b>		
<i>sempervirens</i> , Common Boxwood .....	.55	1.75
<b>CALLICARPA</b>		
<i>americana</i> , American Beautyberry .....	.45	1.45
<b>CALLUNA</b>		
<i>vulgaris</i> , Scotch Heather .....	.65	2.25
<b>CALYCANTHUS</b>		
<i>floridus</i> , Common Sweetshrub, C.S. ....	.40	1.20
<i>occidentalis</i> , California Sweetshrub .....	1.00	3.75
<b>CARAGANA</b>		
<i>arborescens</i> , Siberian Pea Tree .....	.35	1.05
<b>CARPINUS</b>		
<i>betulus</i> , European Hornbeam .....	.25	.85
<i>caroliniana</i> , American Hornbeam .....	.35	1.00
<b>CASTANEA</b>		
As we do not carry stock of <i>Castanea</i> seed, orders can only be accepted if received prior to collecting season.		
<i>dentata</i> , American Chestnut .....	...	.45
<i>pumila</i> , Chinquapin .....	...	.75
<i>sativa</i> , Spanish Chestnut .....	...	.50
<b>CATALPA</b>		
<i>bignonioides</i> , Common Catalpa .....	.25	.75
<i>speciosa</i> , Western Catalpa .....	.25	.65
<b>CEANOTHUS</b>		
<i>americanus</i> , Jersey-tea, C.S. ....	.80	2.75
<b>CEDRUS</b>		
Our <i>Cedrus</i> seeds are collected in the best European sources. We generally have very good germination.		
<i>atlantica</i> , Atlas Cedar .....	.85	2.75
<i>atlantica argentea</i> , Silver Atlas Cedar.....	.90	3.10
<i>atlantica glauca</i> , Blue Atlas Cedar.....	.85	2.90
<i>deodara</i> , Deodar Cedar .....	.65	2.10
<i>libani</i> , Cedar of Lebanon .....	.85	3.00
<b>CELASTRUS</b>		
<i>scandens</i> , American Bittersweet, C.S. ....	.65	2.15
<b>CELTIS</b>		
<i>australis</i> , European Hackberry, C.S. ....	.30	.95
<i>occidentalis</i> , Hackberry, C.S. ....	1.00	3.25
<i>sinensis</i> , Chinese Hackberry, C.S.....	.25	.80
<i>tourneforti</i> , Oriental Hackberry .....	.40	1.25
<b>CEPHALANTHUS</b>		
<i>occidentalis</i> , Common Buttonbush .....	...	.60

---

*Order Early This Year*

---

**TREE AND SHRUB SEEDS**

	¼ lb.	lb.
<b>CEPHALOTAXUS</b>		
drupacea, Japanese Plum Yew .....	...	.50
fortunei, Chinese Plum Yew .....	.55	1.75
harringtonia, Harrington Plum Yew .....	.55	1.75
<b>CERCIS</b>		
canadensis, American Redbud .....	.40	1.25
occidentalis, California Redbud .....	1.00	3.50
siliquastrum, Judas Tree, C.S. ....	...	.65
<b>CHAMAECYPARIS</b>		
lawsoniana, Lawson Cypress .....	.55	1.65
lawsoniana argentea, Silver Lawson Cypress.....	1.00	3.50
lawsoniana pyramidalis, Sentry Cypress .....	.80	2.75
nootkatensis, Nootka Cypress .....	2.00	6.00
obtusa var. breviramea, Dwarf Cypress.....	.85	3.00
pisifera filifera, Thread Retinospera .....	2.60	9.75
<b>CHIONANTHUS</b>		
virginica, White Fringetree .....	.45	1.50
<b>CINNAMOMUM</b>		
camphora, Camphor Tree .....	.45	1.50
<b>CITRUS</b>		
aurantium, Seville Orange .....	.65	2.25
trifoliata, Hardy Orange .....	.45	1.25
<b>CLADRASTIS</b>		
lutea, Yellow-wood .....	.65	2.10
<b>CLEMATIS</b>		
crispa, Curly Clematis .....	.50	...
davidiana (Heracleafolia), fragrant, deep blue .....	\$2.50 per ½ oz.	
flammula, Plume Clematis, C.S. ....	.50	1.65
floribunda, large-flowering mixed .....	.85	3.00
montana, Anemone Clematis .....	2.75	10.00
paniculata, fragrant white .....	.60	1.95
virginiana, Virgin's Bower .....	1.00	3.50
vitalba, Travelers Joy .....	.25	.75
viticella, Italian Clematis .....	.30	1.00
<b>CLETHRA</b>		
alnifolia, Summersweet .....	.40	1.25
<b>COLUTEA</b>		
arborescens, Common Bladder-senna .....	.30	.95
<b>CORIARIA</b>		
japonica, Japanese Coriaria, C.S. ....	1.15	4.00
<b>CORNUS</b>		
alba, Tatarian Dogwood, C.S. ....	.60	2.25
amomum, Silky Dogwood, D.B. ....	.35	1.15
canadensis, Bunchberry, D.B. ....	.75	2.50
florida, Flowering Dogwood, D.B. ....	.25	.60
mas, Cornelian-Cherry, C.S. ....	.25	.75
nuttali, Pacific Dogwood, D.B. ....	.55	1.75
paniculata, Gray Dogwood, D.B. ....	.45	1.50
rugosa, Roundleaf Dogwood, D.B. ....	.55	1.75
sanguinea, Bloodtwig, Dogwood, C.S. ....	.35	1.10
stolonifera, Red Osier Dogwood, D.B. ....	.40	1.25
<b>CORYLUS</b>		
avellana, Filbert .....	...	.65
avellana atropurpurea, Purple Filbert .....	.80	2.75
columna, Tree Hazelnut .....	.30	1.00
<b>COTONEASTER</b>		
acutifolia, Peking Cotoneaster, C.S. ....	.85	3.00
divaricata, Spreading Cotoneaster, C.S. ....	.85	3.00
francheti, Franchet Cotoneaster, C.S. ....	1.35	4.00
horizontalis, Rock Cotoneaster, C.S. ....	1.40	5.00
microphylla, Rockspray, C.S. ....	1.75	6.50
pannosa, Silverleaf Cotoneaster, C.S. ....	1.05	3.75
simonsi, Simons Cotoneaster, C.S. ....	1.05	3.75

---

*Order Early This Year*

---

**TREE AND SHRUB SEEDS**

	¼ lb.	lb.
<b>CRATAEGUS</b>		
<i>coccinea</i> , Thicket Hawthorn, C.S. ....	.45	1.35
<i>cordata</i> , Washington Hawthorn, D.B. ....	.30	.90
<i>crusgalli</i> , Cockspur Thorn, C.S. ....	.40	1.25
<i>monogyma</i> , English Hawthorn, C.S. ....	.30	.85
<i>oxycantha</i> , English Hawthorn, C.S. ....	.30	.85
<i>prunifolia</i> , Plumleaf Hawthorn, C.S. ....	.45	1.50
<i>punctata</i> , Dotted Hawthorn (Berries) ....	.40	1.20
<b>CRYPTOMERIA</b>		
<i>japonica elegans</i> , Plume Cryptomeria ....	.85	3.00
<i>japonica lobbi</i> , Lobb Cryptomeria ....	.80	2.75
<b>CUPRESSUS</b>		
<i>arizonica</i> , Arizona Cypress ....	.75	2.50
<i>benthami</i> , Bentham Cypress ....	.80	2.75
<i>funebri</i> , Mourning Cypress ....	.70	2.25
<i>goveniana</i> , Gowen Cypress ....	.70	2.25
<i>lusitanica</i> , Portuguese Cypress ....	.85	3.00
<i>macnabiana</i> , Macnab Cypress ....	1.15	4.25
<i>macrocarpa</i> , Monterey Cypress ....	.55	1.75
<i>sempervirens</i> , Italian Cypress ....	.25	.75
<i>sempervirens horizontalis</i> , Spreading Italian Cypress ....	.25	.75
<i>sempervirens stricta</i> , Columnar Italian Cypress..	.30	.85
<i>torulosa</i> , Bhutan Cypress ....	.45	1.35
<b>CYDONIA</b>		
<i>japonica</i> , Flowering Quince, C.S. ....	.85	3.00
<i>oblonga</i> , ( <i>vulgaris</i> ), Common Quince, C.S.....	.85	3.00
<b>CYTISUS</b>		
<i>nigricans</i> , Spike Broom ....	1.75	6.85
<i>scoparius</i> , Scotch Broom ....	.35	1.15
<b>DAPHNE</b>		
<i>mezereum</i> , February Daphne, C.S. ....	1.15	4.00
<i>mezereum rubrum</i> , Red February Daphne, C.S...	1.45	5.25
<b>DEUTZIA</b>		
<i>scabra crenata</i> , C.S. ....	.55	1.75
<b>DIOSPYROS</b>		
<i>virginiana</i> , Common Persimmon ....	.25	.75
<b>DRACAENA</b>		
<i>draco</i> , Dragontree ....	.75	2.50
<b>ELAEAGNUS</b>		
<i>angustifolia</i> , Russian Olive ....	.25	.75
<i>longipes</i> , Cherry Elaeagnus ....	.55	1.75
<b>ENKIANTHUS</b>		
<i>campanulatus</i> , Redvein Enkianthus ....	1.50	4.50
<i>cernus rubens</i> ....	1.00	3.00
<b>EUONYMUS</b>		
<i>americanus</i> , Brook Euonymus ....	.35	1.25
<i>atropurpureus</i> , Wahoo ....	.45	1.50
<i>latifolius</i> , Broadleaf Burningbush ....	.40	1.20
<b>EXOCHORDA</b>		
<i>grandiflora</i> , Common Pearlbush ....	.55	1.75
<b>FAGUS</b>		
<i>americana</i> , American Beech ....	ask for prices	
<i>sylvatica</i> , European Beech ....	.30	.85
<i>sylvatica purpurea</i> , Purple Beech ....	.55	1.75
<b>FRAXINUS</b>		
<i>americana</i> , White Ash ....	.35	1.10
<i>excelsior</i> , European Ash ....	.30	.85
<i>lanceolata</i> , Green Ash ....	.35	1.10
<i>mandschurica</i> , Manchurian Ash ....	.40	1.25
<i>ornus</i> , Flowering Ash ....	.30	.85
<i>pennsylvanica</i> , Red Ash ....	.30	.85
<i>velutina</i> , Arizona Ash ....	.50	1.50

---

*Order Early This Year*



---

**TREE AND SHRUB SEEDS**

	¼ lb.	lb.
<b>GAULTHERA</b>		
procumbens, Wintergreen .....	.75	2.50
<b>GENISTA</b>		
germanica, German Broom .....	1.70	5.50
tinctoria, Woodwaxen .....	1.25	4.00
<b>GINKGO</b>		
biloba, Maidenhair Tree .....	...	.35
<b>GLEDITSIA</b>		
triacanthos, Common Honeylocust .....	.30	.95
triacanthus inermis, Thornless Honeylocust .....	.45	1.50
<b>GYMNOCLADUS</b>		
dioica, Kentucky Coffeetree .....	.30	1.00
<b>HALESIA</b>		
tetraptera, Great Silverbell .....	.30	.95
<b>HAMAMELIS</b>		
japonica, Japanese Witch-Hazel .....	.85	3.00
virginiana, Common Witch-Hazel, C.S. ....	.40	1.25
<b>HEDERA</b>		
helix, English Ivy .....	.25	.85
<b>HIBISCUS</b>		
mutabilis, Cotton Rosemallow .....	.55	1.80
<b>*HICORIA—quoted on request</b>		
<b>HIPPOPHAE</b>		
rhamnoides, Common Sea-Buckthorn, C.S.....	.45	1.40
<b>HOVENIA</b>		
dulcis, Raisin Tree .....	.40	1.35
<b>ILEX</b>		
aquifolium, English Holly, C.S. ....	.45	1.50
cornuta, Chinese Holly, C.S. ....	.75	2.50
glabra, Inkberry, (Northern only) .....	.35	1.20
monticola, Mountain Winterberry, C.S.....	.55	1.75
opaca, American Holly, D.B. ....	.30	.90
pedunculosa, Longstalk Holly, C.S. ....	.60	2.00
verticillata, Common Winterberry .....	.35	1.10
vomitaria, Youpon, D.B. ....	.50	1.50
<b>*JUGLANS</b>		
As we do not carry stock of Juglans seed, orders can only be accepted if received prior to collecting season.		
cinerea, Butternut, hulled .....	..	.09
nigra, Black Walnut, hulled .....	...	.09
<b>JUNIPERUS</b>		
communis, Common Juniper, C.S. ....	.45	1.50
communis depressa, Prostrate Juniper .....	.45	1.50
communis montana, Mountain Juniper .....	.45	1.50
excelsa, Greek Juniper, C.S. ....	.75	2.50
horizontalis, Creeping Juniper .....	.90	3.00
horizontalis douglasi, Waukegan Juniper.....	.75	2.50
japonica, Japanese Juniper, C.S. ....	.85	3.00
macrocarpa, Plum Juniper, C.S. ....	.55	1.75
monosperma, Cherrystone Juniper .....	.50	1.50
oxycedrus, Prickly Juniper, C.S. ....	.55	1.75
procumbens, Hardy Chinese Creeping Juniper, C.S.	.75	2.60
sabina, Savin Juniper, Berries .....	.45	1.50
scopulorum, Colorado Juniper .....	.45	1.50
virginiana, Red Cedar, (Northern), B.....	.40	1.10
<b>KALMIA</b>		
latifolia, Mountain Laurel, C.S.....	\$ .75 per oz.	
<b>KOELREUTERIA</b>		
paniculata, Golden-rain Tree .....	.45	1.50
<b>LABURNUM</b>		
alpinum, Scotch Laburnum .....	.55	1.75
vulgare, Goldenchain .....	.40	1.25
<b>LAGERSTROEMIA</b>		
indica, Common Crapemyrtle, pink-fl. ....	1.00	3.50

---

*Order Early This Year*

## TREE AND SHRUB SEEDS

	¼ lb.	lb.
<b>LARIX</b>		
<i>europaea</i> , European Larch .....	.50	1.50
<i>occidentalis</i> , Western Larch .....	1.00	3.25
<i>sibirica</i> , Siberian Larch .....	.80	2.50
<b>LAUROCERASUS</b>		
<i>caroliniana</i> , Carolina Cherry-Laurel .....	.25	.80
<i>lusitanica</i> , Portugal Laurel .....	.45	1.50
<i>officinalis</i> , English Cherry Laurel .....	.40	1.25
<b>LAURUS</b>		
<i>nobilis</i> , Grecian Laurel .....	.25	.90
<b>LEDUM (Labrador-Tea)</b>		
<i>palustre nipponicum</i> .....	\$3.00 per oz.	
<b>LESPEDEZA</b>		
<i>formosa albiflora</i> ( <i>Desmodium japonica album</i> )..	.49	1.25
<b>LEUCOTHOE</b>		
<i>catesbaei</i> , Drooping Leucothoe, C.S. \$1.00 per oz.		
<i>grayana</i> .....	2.00	7.50
<b>LIBOCEDRUS</b>		
<i>decurrens</i> , California Incense Cedar .....	.55	1.80
<b>LIGUSTRUM</b>		
<i>amurense</i> , Amur Privet, South .....	.25	.75
<i>japonicum</i> , Japanese Privet .....	.40	1.20
<i>lucidum</i> , Glossy Privet .....	.30	.85
<i>nepalense</i> , Nepal Privet .....	.40	1.20
<i>ovalifolium</i> , Californian Privet .....	.35	1.10
<i>vulgare</i> , European Privet .....	.30	.85
<b>LIQUIDAMBER</b>		
<i>syraciflua</i> , Sweetgum .....	ask for prices	
<b>LIRIODENDRON</b>		
<i>tulipifera</i> , Tulip Tree .....	ask for prices	
<b>LOISELEURIA (Azalea) procumbens</b>		
A gem for rock garden cultures..... pkt. \$1.00		
<b>LONICERA</b>		
<i>caprifolium</i> , Sweet Honeysuckle .....	1.10	4.00
<i>tatarica</i> , Tatarian Honeysuckle .....	1.10	4.00
<i>xylostemum</i> , European Fly Honeysuckle .....	.40	1.25
<b>MAGNOLIA</b>		
Best results are obtained from Magnolia when the seed is planted as promptly as possible after harvest. Early orders are therefore recommended.		
<i>accuminata</i> , Cucumbertree .....	.45	1.50
<i>grandiflora</i> , Southern Magnolia .....	.55	1.75
<i>tripetala</i> , Umbrella Magnolia .....	.45	1.50
<b>MAHONIA</b>		
<i>aquifolium</i> , Oregon Hollygrape, C.S. ....	.50	1.45
<i>japonica</i> , C.S. ....	.80	2.75
<i>nervosa</i> , Longleaf Hollygrape, C.S. ....	1.50	5.25
<b>MALUS</b>		
<i>baccata</i> , Siberian Crab (domestic) C.S.....	1.75	6.50
<i>sylvestris</i> , Apple .....	.25	.75
(Apply for Special Prices)		
<b>MELIA</b>		
<i>azedarach</i> , Chinaberry .....	...	.55
<b>MENZIESIA</b>		
<i>cilicalyx</i> var. <i>bicolor</i> .....	\$7.50 per oz.	
<i>cilicalyx</i> var. <i>multiflora</i> .....	7.50 per oz.	
<b>MERATIA</b>		
<i>praecox</i> .....	.80	2.75
<b>MORUS</b>		
<i>alba</i> , White Mulberry .....	.40	1.20
<i>alba tatarica</i> , Russian Mulberry .....	ask for prices	
<i>nigra</i> , Black Mulberry .....	.55	1.75

*Order Early This Year*

---

**TREE AND SHRUB SEEDS**

	¼ lb.	lb.
<b>MYRICA</b>		
<i>carolinensis</i> , Northern Bayberry .....	.40	1.20
<i>cerifera</i> , Southern Waxmyrtle .....	.45	1.50
<b>NYSSA</b>		
<i>aquatica</i> , Big Tupelo .....	.30	.95
<i>sylvatica</i> , Tupelo .....	ask for prices	
<b>OXYDENDRUM</b>		
<i>arboreum</i> , Sourwood .....	.40	1.25
<b>PALIURUS</b>		
<i>spina-christi</i> , Christ Thorn .....	.30	.95
<b>PHOTINIA</b>		
<i>arbutifolia</i> , Christmasberry .....	.45	1.50
<b>PHYLLODOCE</b>		
<i>coerulea (taxifolia)</i> .....	\$3.50 per oz.	
<b>PHYSOCARPUS</b>		
<i>opulifolius</i> , Common Ninebark .....	.50	1.50
<b>PICEA</b>		
<i>canadensis</i> , White Spruce .....	.60	2.00
<i>engelmanni</i> , Engelmann Spruce .....	1.00	3.25
<i>excelsa</i> , Norway Spruce .....	.40	1.25
<i>glauca albertiana</i> , Black Hills Spruce .....	1.50	5.50
<i>koyamai</i> .....	1.30	5.00
<i>mariana</i> , Black Spruce .....	1.75	6.00
<i>omorika</i> , Serbian Spruce (special strain) .....	9.00	35.00
<i>orientalis</i> , Oriental Spruce .....	3.00	10.00
<i>polita</i> , Tigertail Spruce .....	.85	3.00
<i>pungens</i> , Colorado Spruce .....	1.00	3.25
<p>This <i>pungens</i> is collected in one of the best blue belts in Colorado and will give as many true blue trees as any seed will. It is also one of the varieties the U. S. Forest Service is considering for the new Shelter Belt Project just recently authorized by the President. You should grow some.</p>		
<i>rubra</i> , Red Spruce .....	1.00	3.50
<i>sitchensis</i> , Sitka Spruce .....	.95	3.25
<b>PIERIS</b>		
<i>floribunda</i> , Mountain Andromeda, C.S. ....	1.50	5.50
<b>PINUS</b>		
<i>albicaulis</i> , Whitebarked Pine .....	3.00	10.00
<i>aristata</i> , Bristlecone Pine .....	.70	2.25
<i>attenuata</i> , Knobcone Pine .....	2.00	7.00
<i>banksiana</i> , Jack Pine .....	.85	3.00
<i>canariensis</i> , Canary Island Pine (genuine).....	.50	1.75
<i>caribaea</i> , Slash Pine .....	.90	3.25
<i>cembra</i> , Swiss Stone Pine .....	.25	.90
<i>contorta</i> , Shore Pine .....	1.05	3.75
<i>coulteri</i> , Coulter Pine .....	1.10	4.00
<i>echinata</i> , Short Leaf Pine .....	ask for prices	
<i>edulis</i> , Nut Pine .....	.35	1.25
<i>excelsa</i> , Himalayan Pine .....	.55	1.75
<i>flexilis</i> , Limber Pine .....	.75	2.50
<i>halepensis</i> , Aleppo Pine .....	.50	1.45
<i>jeffreyi</i> , Jeffrey Pine .....	.60	1.75
<i>lambertiana</i> , Sugar Pine .....	.50	1.75
<i>leucodermis</i> , Greybark Pine .....	1.10	4.00
<i>monophylla</i> , Singleleaf Pine .....	.85	3.00
<i>montana</i> , Swiss Mountain Pine .....	.55	2.00
<i>montana compacta</i> , very dwarf .....	.90	3.10
<i>montana mughus</i> , Mugho Pine .....	.65	2.25
<i>montana pumilio</i> , Shrubby Swiss Pine .....	.80	3.00
<i>montana uncinata</i> , Large Swiss Pine .....	.60	2.25
<i>monticola</i> , Western White Pine .....	.85	3.00
<i>murrayana</i> , Lodgepole Pine .....	1.00	3.50
<i>nigra</i> , Austrian Pine .....	.55	1.75
<i>nigra poiretiana</i> , Corsican Pine (genuine).....	.90	3.25

---

*Order Early This Year*

TREE AND SHRUB SEEDS

PINUS

	¼ lb.	lb.
<i>palustris</i> , Longleaf Pine...	.65	2.10
<i>parviflora (pentaphylla)</i> , Japanese White Pine...	.35	1.25
<i>peuce</i> , Macedonian Pine...	.65	2.10
<i>pinaster</i> , Cluster Pine....	.90	3.25
<i>pinea</i> , Italian Stone Pine..	.25	.85
<i>ponderosa</i> , Western Yellow Pine (Colo.) .....	.55	1.75
<i>ponderosa</i> , Western Yellow Pine (Wash.) .....	.60	2.00
<i>radiata</i> , Monterey Pine...	.80	2.75
<i>resinosa</i> , Red Pine .....	1.60	6.00
<i>rigida</i> , Pitch Pine .....	.60	2.00
<i>sabiniana</i> , Digger Pine....	.50	1.75
<i>strobus</i> , White Pine .....	.60	2.00
<i>sylvestris</i> , Scot's Pine ....	.40	1.40



PINUS

*sylvestris*, H. B. Special  
Scots Pine .... \$1.50 \$5.00

**HERBST BROTHERS'  
SPECIAL SCOT'S PINE**

is the product of the most pains-taking tree-breeding in the last 200 years of practical forestry.

**FOR STRAIGHT-GROWING TREES**

**General Data:** These trees grow from 65 to 98 feet high and attain an age of 66 to 120 years. Knots usually on upper third of trunk—lower two-thirds clear. Needles 2 3-10 inches to 3 1-10 inches long—borne in very heavy clusters. Color of needles: deep green from September to April—a trifle lighter from May to August. Seedlings reach a height of 4 to 6 inches in first year—growth thereafter, 11 to 25 inches yearly.

**It's Fast Growing and Good**

Please remember that ALL "H. B. SPECIAL SEED" are gathered from trees—never from the ground. The climber's equipment consists of: a half-bushel cone-bag slung across the shoulders; a light-weight 8 to 10 foot pole with a hooked end for drawing in the cone-bearing branches for ease in picking; and the usual lineman's climbers.

	¼ lb.	lb.
<i>sylvestris rigensis</i> , Riga Scot's Pine .....	.70	2.50
<i>taeda</i> , Loblolly Pine....	ask for prices	

PITTOSPORUM

	¼ lb.	lb.
<i>undulatum</i> , Orange Pittosporum .....	.75	2.50

PLATANUS

<i>occidentalis</i> , American Planetree .....	.30	.85
<i>orientalis</i> , European Planetree .....	.30	.85

*Order Early This Year*

---

**TREE AND SHRUB SEEDS**

	¼ lb.	lb.
<b>PLUMBAGO</b>		
capensis, Cape Plumbago.....	\$3.00 per 1000 seeds	
<b>POPULUS</b>		
deltoides, Southern Cottonwood .....	.40	1.25
nigra, Black Poplar .....	.35	1.10
nigra italica, Lombardy Poplar .....	.40	1.25
tremula, European Aspen .....	.40	1.25
<b>PRUNUS</b>		
americana, American Plum .....	ask for prices	
avium, Mazzard .....	.25	.75
cerasifera, Myrobalan Plum .....	.25	.75
mahaleb, Mahaleb Cherry .....	.25	.75
maritima, Beach Plum .....	.65	2.25
pennsylvanica, Pin Cherry .....	.45	1.35
serotina, Black Cherry .....	ask for prices	
virginiana, Common Chokecherry .....	.30	1.00
<b>PSEUDOLARIX</b>		
kaempferi, Goldenlarch .....	1.10	4.00
<b>PSEUDOTSUGA</b>		
douglasi glauca, Colorado Douglas Fir.....	.65	3.25
douglasi viridis, Washington Douglas Fir.....	1.50	5.00
douglasi viridis, California Douglas Fir.....	1.35	4.75
<b>PTELEA</b>		
trifoliata, Common Hoptree .....	.35	1.25
<b>PUERARIA</b>		
thunbergiana, Kudzu Bean, C.S. ....	.45	1.45
<b>PYRACANTHA</b>		
angustifolia, Narrowleaf Firethorn .....	.90	3.00
coccinea, Scarlet Firethorn .....	.40	1.20
coccinea lalandi, Laland Firethorn, C.S.....	.70	2.25
<b>PYRUS</b>		
communis, French Pear .....	.55	1.75
<b>*QUERCUS</b>		
As we do not carry stock of Acorns, orders can only be accepted if received prior to the collecting season.		
alba, White Oak .....	ask for prices	
bicolor, Swamp White Oak .....	.27	
coccinea, Scarlet Oak .....	.23	
illicifolia, Scrub Oak .....	.35	
nigra, Water Oak .....	.17	
palustris, Pin Oak .....	ask for prices	
phellos, Willow Oak .....	.23	
prinus, Chestnut Oak .....	.20	
robur, English Oak .....	.17	
rubra, Common Red Oak .....	ask for prices	
stellata, Post Oak .....	.18	
velutina, Black Oak .....	ask for prices	
<b>RAPHIOLEPIS</b>		
indica, India-Hawthorn .....	.65	2.25
<b>RHAMNUS</b>		
alaternus, Italian Buckthorn .....	1.00	3.50
alpina, Alpine Buckthorn .....	.70	2.25
caroliniana, Carolina Buckthorn .....	.55	1.70
cathartica, Common Buckthorn, C.S. ....	.60	1.75
frangula, Glossy Buckthorn .....	.45	1.35
purshiana, Cascara Buckthorn, C.S. ....	.55	1.80

---

*Order Early This Year*

TREE AND SHRUB SEEDS

	¼ lb.	lb.
<b>RHODODENDRON</b>		
arboreum, Tree Rhododendron, C.S.	\$1.35 per oz.	
barbatum, C.S.	\$1.00 per pkt.	
californicum, Coast Rhododendron, C.S.	\$1.25 per oz.	
campanulatum, C.S.	\$1.00 per pkt.	
campylocarpum, C.S.	\$1.00 per pkt.	
carolinianum, Carolina Rhododendron, C.S.	\$1.10 per oz.	
catawbiense, Catawba Rhododendron, C.S.	\$1.10 per oz.	
cinnabarium, C.S.	\$1.00 per pkt.	
cunninghami, C.S.	\$1.00 per 1/16 oz.	
ferrugineum, Rock Rhododendron, C.S.	\$2.50 per oz.	
fulgens, C.S.	\$1.00 per pkt.	
hybrids mixed, C.S.	\$2.00 per 1/8 oz.	
keiskei, C.S.	\$5.00 per oz.	
lanatum, C.S.	\$1.00 per pkt.	
maximum, Rosebay Rhododendron, C.S.	\$.75 per oz.	
penticum, Pontic Rhododendron, C.S.	\$1.00 per oz.	
wighti, Type D, C.S.	\$1.00 per pkt.	
<b>RHUS</b>		
canadensis, Fragrant Sumac	.35	1.10
coppalina, Shining Sumac	.30	1.00
cotinus, Common Smoketree	.55	1.90
glabra, Smooth Sumac	.30	1.00
typhina, Staghorn Sumac	.30	1.00
<b>RIBES</b>		
alpinum, Mountain Currant, C.S.	3.00	10.00
aureum, Slender Golden Currant, C.S.	4.25	12.00
cynosbati, Pasture Gooseberry, C.S.	.85	3.00
nigrum, European Black Currant, C.S.	.95	3.50
sanguineum, Winter Currant, C.S.	1.40	5.00
<b>ROBINIA</b>		
pseudacacia, Common Locust		ask for prices
pseudoacacia inermis, Thornless Locust	.35	1.25
<b>ROSA</b>		
blanda, Meadow Rose, Hips	.35	1.25
canina, Dogbrier, C.S.	.25	.80
humilis, Pasture Rose, Hips	.35	1.25
lucida, Virginia Rose, Hips	.35	1.25
nitida, Bristly Rose, Hips	.35	1.25
palustris, Swamp Rose, Hips	.35	1.25
rubiginosa, Sweetbrier, C.S.	.55	1.75
rubrifolia, Redleaf Rose, C.S.	.65	2.00
setigera, Prairie Rose, Hips	.35	1.25
<b>SAMBUCUS</b>		
canadensis, American Elder	.30	1.15
nigra, European Elder, C.S.	.65	2.10
<b>SASSAFRAS</b>		
varrifolium, Common Sassafras	.30	.90
<b>SCHIZOPHRAGMA</b>		
hydrangeoides, Japanese Hydrangea Vine	1.00	3.50
<b>SCIADOPYTIS</b>		
verticillata, Umbrella Pine	.60	1.85
<b>SEQUOIA</b>		
gigantea, Giant Sequoia	2.00	7.00
sempervirens, California Redwood	.70	2.25
<b>SOPHORA</b>		
japonica pendula, Weeping Scholartree	.25	.75

Order Early This Year

---

**TREE AND SHRUB SEEDS**

	¼ lb.	lb.
<b>SORBUS</b>		
<i>americana</i> , American Mountain Ash .....	.35	1.25
<i>aria</i> , White Beamtree .....	.55	1.75
<i>aucuparia</i> , European Mountain Ash, B. ....	.25	.85
<i>domestica</i> , Servicetree, C.S. ....	1.35	4.75
<i>torminalis</i> , Service Tree, C.S. ....	2.00	7.00
<b>SPARTIUM</b>		
<i>junctum</i> , Weavers Broom .....	.35	1.10
<b>STAPHYLEA</b>		
<i>bumalda</i> , Bumalda Bladdernut, C.S. ....	.25	.80
<i>pinnata</i> , European Bladdernut .....	.25	.95
<b>STYRAX</b>		
<i>americana</i> , American Snowbell .....	.30	1.00
<b>SYMPHORICARPOS</b>		
<i>racemosa</i> , Common Snowberry .....	.50	1.50
<i>vulgaris</i> , Coralberry .....	.40	1.35
<b>SYRINGA</b>		
<i>japonica</i> , Japanese Tree Lilac, C.S. perfectly hardy	1.50	5.30
<i>josikaea</i> , Hungarian Lilac, C.S... \$2.50 per ¼ lb.		
<p>One of our nurserymen friends who has particularly fine stock of <i>josikaea</i> has furnished this seed. The supply is limited.</p>		
<i>vulgaris</i> , Common Lilac .....	.60	2.00
<i>vulgaris alba</i> , Common White Lilac .....	.85	2.50
<b>TAMARIX</b>		
<i>gallica</i> , French Tamarix .....	.55	1.80
<b>TAXODIUM</b>		
<i>distichum</i> , Common Baldcypress .....	.55	1.75
<b>TAXUS</b>		
<i>baccata</i> , English Yew .....	.55	1.80
<i>baccata adpressa</i> , Shortleaf English Yew .....	1.00	3.50
<i>brevifolia</i> , Pacific Yew .....	2.25	8.00
<p>May we quote on your needs of <i>Taxus cuspidata</i> for delivery as soon as the 1934 crop is fully cured. Seedlings will produce upright plants and can be produced much cheaper than rooted cuttings.</p>		
<b>THUJA</b>		
<i>occidentalis</i> , American Arborvitae .....	.85	3.25
<i>occidentalis pyramidalis</i> , American Pyramidal Arborvitae .....	1.00	3.50
<i>occidentalis wareana</i> , Ware Arborvitae .....	2.25	8.00
<i>orientalis aurea</i> , Golden Oriental Arborvitae....	.70	2.25
<i>orientalis compacta</i> , Dwarf Oriental Arborvitae..	.70	2.25
<i>orientalis sieboldi</i> , Siebold Arborvitae .....	.60	2.00
<i>plicata</i> , Giant Arborvitae .....	.85	3.00
<b>TILIA</b>		
<i>americana</i> , American Linden .....	.25	.85
<i>americana macrophylla</i> , Bigleaf American Linden	.30	1.00
<i>cordata</i> , Littleleaf European Linden .....	.30	1.00
<i>japonica</i> , Japanese Linden, C.S. ....	.50	1.50
<i>platyphyllos</i> , Bigleaf European Linden .....	.25	.90
<i>tomentosa</i> , Silver Linden .....	.40	1.25
<i>vulgaris</i> , Common Linden .....	.25	.90
<b>TSUGA</b>		
<i>canadensis</i> , Canadian Hemlock .....	1.65	6.00
<i>caroliniana</i> , Carolina Hemlock .....	1.75	6.50
<i>diversifolia</i> , Japanese Hemlock .....	.85	2.85
<i>heterophylla</i> , Western Hemlock .....	2.10	8.00
<i>mertensianna</i> , Mountain Hemlock .....	1.75	6.50

---

*Order Early This Year*

---

**TREE AND SHRUB SEEDS**

	¼ lb.	lb.
<b>ULEX</b>		
<i>europaeus</i> , Common Gorse .....	.80	2.75
<b>ULMUS</b>		
<i>americana</i> , American Elm .....	.25	.75
<i>pumila</i> , delivery before May 15th.....	1.10	4.00
<i>pumila</i> (imported hardy Korean).....	.40	1.50
<b>VACCINIUM</b>		
<i>corymbosum</i> , Highbush Blueberry, C.S.....	1.85	6.50
<b>VIBURNUM</b>		
<i>acerifolium</i> , Mapleleaf Viburnum .....	.50	1.50
<i>americanum</i> , American Cranberry Bush .....	.45	1.35
<i>carlesi</i> , C.S. ....	.85	2.80
<i>cassinoides</i> , Witherod, D.B. ....	.50	1.50
<i>dentatum</i> , Arrowwood .....	.45	1.35
<i>dilatatum</i> , Linden Viburnum, C.S. ....	.30	1.00
<i>furcatum</i> , Forked Viburnum, C.S. ....	.55	1.70
<i>lantana</i> , Wayfaring Tree .....	.55	1.75
<i>lentago</i> , Nannyberry .....	.50	1.50
<i>odoratissimum</i> , Sweet Viburnum, C.S. ....	.35	1.20
<i>opulus</i> , European Cranberry .....	.45	1.35
<i>prunifolium</i> , Blackhaw .....	.45	1.35
<i>sargentii</i> , Sargent Viburnum, C.S. ....	.55	1.70
<i>sieboldi</i> , Siebold Viburnum, C.S. ....	.30	.95
<i>tinus</i> , Laurustinus, C.S. ....	.40	1.25
<i>tomentosum</i> , Doublefile Viburnum, C.S. ....	.60	2.00
<i>wrightii</i> , C.S. ....	.50	1.50
<b>WISTERIA</b>		
<i>frutescens</i> , American Wisteria .....	1.00	3.25

**FLOWER SEEDS**

<b>ABRONIA (Sand Verbena)</b>		
<i>umbellata</i> <i>grfla.</i> , Prostrate, fragrant rose.....	per ounce	\$ .25
<b>ACHILLEA</b>		
<i>ageratum</i> , scented, yellow .....	“	1.00
<i>millifolium kelwayi</i> , magenta red .....	per ½ oz.	\$2.25
<i>ptarmica</i> (Sneezewort), The Pearl, dble., white	“	2.50
<b>ACONITUM (Monk's Hood)</b>		
<i>Fischeri</i> , deep blue .....	“	1.20
<b>ACROCLINIUM</b>		
double flowering, mixed .....	“	.25
Colors: rose, white .....	“	.25
<b>ADENOPHORA (Ladybell)</b>		
<i>lilifolia</i> , fragrant pale blue .....	“	1.25
<i>polymorpha</i> , purple blue .....	“	3.00
<i>takedai</i> .....	per ⅛ oz.	\$1.25
<i>verticillata</i> .....	per ¼ oz.	1.00
<b>ADONIS</b>		
<i>vernalis</i> , rich yellow .....	“	1.75
<b>AGAPANTHUS (African or Lily of the Nile)</b>		
<i>umbellatus</i> , blue .....	“	2.25
<b>AGERATUM</b>		
<i>mexicanum</i> , tall mixed .....	“	.25
Colors: blue, white .....	“	.25
<i>mexicanum</i> , dwarf Snowflake, large-fl., (Imp. df. white) .....	“	.25
<i>mexicanum</i> , dwarf Blue Perfection, large-fl....	“	.45
<i>mexicanum</i> , dwarf Princess Victoria Louise, light blue, white center .....	“	.45
<i>mexicanum</i> , dwarf Little Dorrit, blue, ext. dwf.	“	.50

---

*Order Early This Year*



---

**FLOWER SEED**

<b>AGROSTEMMA (see Lychnis)</b>	
<b>ALTHAEA ficifolia</b> , Antwerp Hollyhock, mixed... per ounce	\$ .30
<b>officinalis</b> , Marsh Mallow, pink .....	" .25
<b>ALYSSUM argenteum</b> , yellow .....	" .85
<b>benthami</b> (Sweet Alyssum) .....	" .25
<b>rostratum</b> , yellow .....	" 1.25
<b>AMARYLLIS</b>	
hybrids, mixed .....	\$3.00 per 1000 seed
<b>AMMOBIUM</b>	
<b>alatum grandiflorum</b> , White Immortelle .....	" .25
<b>ANCHUSA</b>	
<b>italica</b> , Italian Bugloss (perennial).....	" .25
<b>ANEMONE</b>	
<b>cernua</b> .....	" 1.00
<b>coronaria</b> , St. Brigid, double .....	" 3.00
<b>ANTHEMIS nobilis</b> , common Camomile, white....	
<b>kelwayi</b> , white .....	" .80
<b>tinctoria</b> , yellow .....	" .65
<b>AQUILEGIA</b>	
<b>caerulea</b> , sky blue .....	" 2.00
<b>canadensis</b> , old rose with yellow.....	" 1.25
<b>flabellata nana alba</b> ,	
early white flowering .....	per 1/8 oz. \$1.80
Long spurred hybrids .....	" 1.50
<b>oxysepala</b> , Early Columbine (Alpine plant)...	" 2.00
<b>vulgaris</b> , double mixed .....	" .35
<b>ARABIS (Rock Cress)</b>	
<b>albida</b> , white .....	" 2.00
<b>racemosa</b> , dwarf white large-fl. ....	" .85
<b>serrata</b> .....	" 2.00
<b>ARCTOTIS grandis</b> , African Lilac Daisy .....	" .25
<b>ARENARIA montana</b> , white .....	per 1/2 oz. \$2.25
<b>ARTEMISIA, annua</b> .....	
<b>sacrorum viridis</b> .....	" .25
<b>ASCLEPIAS tuberosa</b> , orange.....	per 1/4 oz. \$ .85
<b>ASTER, alpinus, alba white</b> .....	
<b>alpinus</b> , blue .....	" 1.50
<b>sinensis</b> , single mixed .....	" 1.60
<b>sinensis</b> , single mixed .....	" .25
<b>ASTILBE</b>	
<b>arendsi</b> hybrids .....	per 1/4 oz. \$2.50
<b>davidi</b> , bright red .....	per 1/4 oz. 2.00
<b>japonica</b> , Japanese Astilbe .....	" 2.00
<b>thunbergi</b> , creamy white .....	per 1/4 oz. 2.00
<b>AUBRIETTA</b>	
<b>deltoidea bougainvillei</b> , dwarf dark blue.....	" 3.00
<b>deltoidea graeca</b> , dwarf light blue .....	" 2.00
<b>deltoidea Leichtlinii</b> , deep rose. per 1/4 oz.	\$2.50
<b>deltoidea</b> , Whitewell Gem, rosy purple	
tinged blue .....	per 1/2 oz. \$4.00
<b>BALLOON VINE, cardiospermum halicacabum</b> ....	" .25
<b>BAPTISIA australis</b> , deep blue .....	" 1.75
<b>BARTONIA aurea</b> , golden yellow .....	" .25
<b>BEGONIA</b>	
<b>evansiana</b> , tall Rose-pink .....	per 1/4 oz. \$2.50

---

*Order Early This Year*

## FLOWER SEED

BELLIS <i>perennis</i> , double-fl. mixed .....	per ounce	\$ .90
<i>perennis monstrosa</i> , double mixed.....	“	1.75
In Colors: rose, white .....	“	1.75
BLETILLA <i>hyacinthina</i> .....	per ½ oz.	\$3.00
BOCCONIA <i>cordata</i> (Japonica) .....	“	.25
BRACHYCOME <i>iberidiflora</i> , mixed .....	“	.50
In Colors: blue, rose, white .....	“	.55
BROWALLIA <i>elata</i> , mixed .....	“	.30
<i>elata</i> , blue .....	“	.35
<i>elata</i> , white .....	“	.35
CACALIA <i>sonchifolia</i> , mixed .....	“	.25
<i>sonchifolia aurantiaca</i> .....	“	.25
<i>sonchifolia coccinea</i> .....	“	.25
CALAMINTHA		
<i>alpine</i> , rich purple .....	per ¼ oz.	\$1.00
CALANDRINIA <i>grandiflora</i> , rose .....	“	.55
<i>speciosa</i> , white .....	“	.25
<i>umbellata</i> , brilliant crimson .....	“	1.50
CALENDULA <i>officinalis</i> , double mixed .....	“	.25
<i>officinalis</i> , double, Lemon Queen .....	“	.25
CALLA		
<i>aethiopica</i> ( <i>Zantedeschia</i> ) .....	per ¼ lb.	\$2.75
<i>aethiopica</i> Pearl of Stuttgart..	per ¼ lb.	3.00
CALLIOPSIS ( <i>Coreopsis</i> )		
<i>lanceolata grandiflora</i> .....	“	.25
<i>lanceolata</i> , Mayfield Giant .....	“	.25
<i>lanceolata grandiflora</i> , semi-double (true)....	“	.40
<i>tinctoria</i> , tall mixed .....	“	.25
<i>tinctoria nana</i> , dwarf mixed .....	“	.25
CAMPANULA <i>grandiflora</i> —see <i>Platycodon</i>		
<i>medium</i> (Canterbury Bells), single mixed ....	“	.25
In Colors: blue, lilac, rose, white.....	“	.25
<i>medium</i> , double rose .....	“	.60
<i>medium</i> , double white .....	“	.60
<i>medium calycanthema</i> , white, rose .....	“	.85
<i>medium calycanthema</i> , <i>striata</i> .....	“	.85
<i>persicifolia grandiflora</i> , blue... per ½ oz.	\$1.00	
<i>persicifolia grandiflora</i> , white.. per ½ oz.	1.00	
<i>pyramidalis</i> , blue .....	per ½ oz.	1.00
<i>pyramidalis</i> , white .....	per ½ oz.	1.00
<i>speculum</i> , mixed .....	“	.25
CANDYTUFT		
<i>annual</i> , mixed .....	“	.25
<i>sempervirens</i> , white .....	“	.85
<i>umbellata</i> , mixed .....	“	.25
CANNA		
<i>indica</i> , large-fl., new hybrids, choice mixed...	“	.25
CARNATIONS (see <i>Dianthus caryophyllus</i> )		
CARYOPTERIS		
<i>mastacanthus</i> , white .....	“	.50
CATANANCHE <i>caerulea</i> , blue .....	“	.90
<i>caerulea</i> , white .....	“	.90
CELOSIA <i>cristata nana</i> , mixed .....	“	.25
<i>plumosa pyramidalis</i> , finest mixed .....	“	.25

---

*Order Early This Year*

## FLOWER SEED

CENTAUREA americana, white .....	per ounce	\$ .25
cyanus, single mixed .....	"	.25
cyanus, double blue .....	"	.25
gymnocarpa .....	"	.45
imperialis, mixed .....	"	.25
imperialis, lilac .....	"	.25
imperialis, purpurea .....	"	.35
imperialis, white .....	"	.35
CERASTIUM tomentosum, silverleaved .....	"	1.00
CHELONE barbata, dwarf Hybrids, mixed.....	"	1.15
CHRYSANTHEMUM		
coronarium, double flowering mixed .....	"	.25
japonicum (A new introduction) .....	"	2.00
Anemone-fl., double mixed.... per 1/2 oz.		\$3.50
leucanthemum, single Spring Marguerite.....	"	.25
leucanthemum hybridum (Shasta Daisy).....	"	.25
leucanthemum hybridum, Shasta Daisy Alaska	"	.50
CIMICIFUGA		
simplex .....	"	1.00
CLARKIA		
elegans, double flowering, mixed.....	"	.25
Colors: appleblossom, brilliant, chamois, Purple		
King, Salmon Queen, vesuvius, white....	"	.30
CLEOME pungens .....	"	.50
CLINTONIA udensis .....	"	1.00
COIX lachrymae .....	"	.25
COLEUS hybrida, mixed .....	"	1.50
hybrida, large flowering, mixed .....	"	4.00
CONANDRON ramondioides .....	per 1/4 oz.	\$1.25
COSMIDIUM		
burridgianum, brown with golden yellow.....	"	.25
CRAWFURDIA trinervis .....	per 1/4 oz.	\$1.25
CREMASTRA appendiculata .....	per 1/4 oz.	\$1.25
CRUCIANELLA stylosa, bright purple .....	"	.65
CYNOGLOSSUM		
amabile, blue (Chinese Forget-me-not).....	"	.25
CYPRIPERIUM japonicum .....	per 1/4 oz.	\$1.25
speciosum .....	per 1/4 oz.	1.25
DAHLIA		
Double Cactus flowering, mixed .....	"	5.00
Double Paeony-flowering, mixed .....	"	4.00
Double Lilliput, small flowering, mixed.....	"	5.00
Double choice varieties, mixed .....	"	1.00
Single Collarlette, mixed .....	"	1.00
Single select varieties, mixed .....	"	.30

## A BETTER DELPHINIUM

We offer seed of a strain (BELLADONNA X WREXHAM), which produces 6-8 ft. plants with 2-3 1/2 foot spikes of enormous 2-2 1/2 in. blooms. In our mixture you will find a wide range of colors — blue, rich purple, mauve, orchid, rose pink, rosy magenta, sapphire and white and combinations of them.

per oz. \$5.00      per 1/4 oz. \$1.50

DIANTHUS barbatus (see Sweet William)		
caryophyllus, (Marguerite Double Carnations),		
mixed .....	"	.50
chinensis (Pinks), double mixed .....	"	.25
chinensis, single mixed .....	"	.25
deltoides, dwarf creeper, rose .....	"	1.25
superbus, Fragrant Perennial, lovely pink....	"	1.00

Order Early This Year

## FLOWER SEED

DIDISCUS caerulea, Blue Laceflower .....	per ounce	\$1.00
<b>DIGITALIS</b>		
canariensis, yellow .....	"	.40
purpurea gloxinaeflora, mixed .....	"	.25
purpurea gloxinaeflora, White .....	"	.25
purpurea gloxinaeflora, Rose .....	"	.25
purpurea gloxinaeflora, The Shirley.....	"	.30
DOLICHOS lablab, mixed .....	"	.25
In Colors: purple, white .....	"	.25
EPIMEDIUM marcanthum violaceum .....	"	2.00
ERINUS alpinus, violet .....	per 1/4 oz.	\$4.00
alpinus, white .....	per 1/4 oz.	4.00
<b>ERYSIMUM</b>		
asperum (Cheiranthus allinoides), orange yellow..	"	.25
ESCHSCHOLTZIA, California Poppy, mixed.....	"	.25
EULALIA (Miscanthus), japonica .....	"	.35
<b>EUPATORIUM</b>		
ageratoides, white .....	per 1/2 oz.	\$0.85
fraseri, white .....	"	.60
<b>EUPHORBIA</b>		
heterophylla (Fire on the Mountain).....	"	.50
variegata (Snow on the Mountain).....	"	.25
FLOWERING KALE, mixed colors .....	"	.80
<b>FORGET-ME-NOT (see Myosotis)</b>		
<b>GAILLARDIA</b>		
grandiflora, perennial large-fl., mixed .....	"	.35
grandiflora maxima, golden yellow .....	"	.70
grandiflora oculata, light colors with red center	"	.70
grandiflora sanguinea, purple red .....	"	.70
picta lorenziana, double mixed .....	"	.25
picta lorenziana, single mixed .....	"	.25
<b>GENTIANA</b>		
acaulis, gentian blue .....	per 1/2 oz.	\$1.25
lutea, yellow .....	"	.50
makinoi .....	"	1.20
nipponica .....	per 1/2 oz.	\$1.25
scabra Buergeri angustifolia .....	"	1.50
<b>GEUM</b>		
coccineum atrosanguineum, semi-dble.,		
orange red .....	"	1.00
coccineum, Lady Stratheden, dble., golden....	"	2.25
coccineum, Mrs. Bradshaw, dble., brilliant red	"	1.50
GLAUCIDIUM palmatum .....	per 1/2 oz.	\$1.25
GLOBE amaranthus, finest mixed .....	"	.25
GODETIA, tall varieties, mixed .....	"	.25
In colors: Duchess of Albany, Gloriosa, Rose		
Queen .....	"	.30
<b>GYPSOPHILA</b>		
elegans, crimson .....	"	.25
elegans, white .....	"	.25
elegans, grandiflora alba .....	"	.25
muralis, rose-pink, dwarf .....	"	.50
oldhamiana .....	"	1.00
paniculata, double flowering .....	"	3.00
repens, dwarf creeper, flowers white.....	"	1.00
HABENARIA radiata .....	per 1/4 oz.	\$1.50

---

*Order Early This Year*

## FLOWER SEED

HELIANTHEMUM mutabile .....	per ounce	\$ .70
HELIOPSIS pitcheriana, golden yellow .....	"	.50
HELLEBORUS niger, Christmas Rose .....	"	.25
HEMEROCALLIS fulva var. Kwanso .....	"	.80
HESPERIS		
matronalis, white .....	"	.25
matronalis, (Sweet Rocket), purple .....	"	.25
HEUCHERA		
hybrids grandiflora, mixed ....	per 1/2 oz.	\$3.50
HOLLYHOCK (Althaea Rosea)		
double flowering, mixed .....	"	.75
single flowering, mixed .....	"	.25
HOSTA (Plantainlily)		
japonica angustifolia .....	"	.80
sieboldiana longipes .....	"	.80
HUMULUS japonicus, Japanese Hop Vine.....	"	.25
HYPERICUM orientale, large yellow flowers.....	"	1.50
IMPATIENS noli-tangere .....	"	2.50
INULA royleana, large yellow.....	per 1/2 oz.	\$0.95
IRIS		
bulleyana .....	per 1/4 oz.	\$2.00
chrysographes .....	per 1/4 oz.	1.75
clarkei .....	per 1/4 oz.	2.50
foeditissima .....	"	.50
forresti .....	per 1/4 oz.	\$2.50
germanica .....	per 1/4 lb.	3.25
gracilipes .....	"	3.00
graminea .....	per 1/4 oz.	\$1.00
japonica .....	"	3.00
kaempferi, collected from		
cultivated plants .....	per 1/4 lb.	\$1.00
koreana .....	per 1/4 oz.	1.75
laevigata .....	per 1/4 lb.	\$1.40
laevigata semperflorens, Everblooming		
Laevigata .....	per 1/4 lb.	\$2.00
orientalis (sanguinea) .....	"	.50
sibirica .....	"	.75
sibirica orientalis .....	per 1/4 lb.	\$1.00
tenax .....	per 1/2 oz.	1.50
xiphiodes (English Iris),		
dark blue (Royal Blue) .....	"	1.00
lavender .....	"	1.00
light blue .....	"	1.00
white (Mt. Blanc) .....	"	1.00
KUDZU VINE .....	"	.25
LATHYRUS latifolius, mixed .....	"	.45
LAVATERA arborea variegata .....		
trimestris, white .....	"	.25
trimestris, red .....	"	.25
LEONTOPODIUM		
alpinum, Edelweiss .....	per 1/8 oz.	\$2.00
LIATRIS pycnostachya .....	"	1.00

---

*Order Early This Year*

## • FLOWER SEED

### LILIUM

auratum platyphyllum (Maranthum) .....	per ounce	\$1.00
croceum .....	"	1.75
elegans .....	"	2.00
giganteum, Giant Lily .....	per ½ oz.	\$1.50
henryi .....	"	3.00
humboldt magnificum .....	per ½ oz.	\$2.50
japonicum, pink (Krameri) .....	"	1.50
pardalinum .....	"	3.50
speciosum rubrum .....	per ½ oz.	\$0.75
sulphur-gale hybrids, (Sulphureum X Regale).....	per ¼ oz.	\$3.50
tenuifolium .....	"	.80
willmottiae .....	"	2.50

### LINARIA

dalmatica, golden yellow .....	"	.75
maroccana hybrida, carmine .....	"	.25

### LINUM flavum, yellow .....

perenne, blue .....	"	2.50
---------------------	---	------

	"	.30
--	---	-----

### LOBELIA cardinalis .....

erinus (gracilis), light blue .....	"	4.00
erinus, white .....	"	.30

	"	.50
--	---	-----

### LUNARIA

biennis kermesina, crimson .....	"	.95
----------------------------------	---	-----

### LUPINUS annual, both large and small seed mixed .....

Hartwegi, blue .....	"	.25
Hartwegi, white .....	"	.25
polyphyllus perennial, mixed .....	"	.25
polyphyllus perennial, blue .....	"	.25

	"	.25
--	---	-----

### LYCHNIS arkwrighti .....

chalcedonica, scarlet .....	"	1.25
chalcedonica, white .....	"	.50
coelirosa, Rose of Heaven .....	"	.60
coronaria, Rose Campion .....	"	.25
viscaria (see Viscaria) .....	"	.25

	"	.25
--	---	-----

### LYSIMACHIA vulgaris, Golden Loosetrife.....

	"	1.00
--	---	------

### MATTHIOLA bicornis, Lavender .....

	"	.25
--	---	-----

### MESEMBRIANTHEMUM crystallinum, Ice Plant .....

	"	.25
--	---	-----

### MIMOSA pudica, Sensitive Plant .....

	"	.30
--	---	-----

### MIMULUS

ringens, Allegheny Monkeyflower (perennial)..	"	1.00
---	---	------

### MOMORDICA charantia (Balsam Pear) .....

	"	.25
--	---	-----

### MYOSOTIS

alpestris, blue .....	"	.25
alpestris robusta grandiflora, improved blue...	"	.25
alpestris nana, dwarf rose .....	"	1.00
alpestris Victoria compacta, dwarf blue .....	"	1.25
alpestris Victoria, compact dwarf rose .....	"	1.25
alpestris Victoria, compact dwarf white.....	"	1.25
arvensis, common Forget-me-not .....	"	.25
dissitiflora, early large blue .....	"	3.00
oblongata perfecta .....	"	.60
palustris, blue .....	"	1.25
palustris semperflorens, blue .....	"	1.00

	"	1.00
--	---	------

*Order Early This Year*

## FLOWER SEED

## NUPHAR

*japonica*, Yellow Buttercup.... per ¼ oz. \$ .75

OENOTHERA *biennis* ..... per ounce \$ .25  
*lamarckiana* ..... “ .25

OMPHALODES *japonica* ..... per ¼ oz. \$1.00

PAEONIA *chinensis*, double-fl., mixed per lb. \$3.50

## PANSY

Giant-fl., extra fine mixed colors..... “ 1.00  
 Giant-fl., waved mixed ..... “ 1.20  
 Jumbo mixed ..... “ 2.00  
 Roggli's or Swiss Giants, mixed per ½ oz. \$2.00 “ 3.50  
 Sakata's Waved Roggli's Giants,  
 mixed ..... per ¼ oz. \$2.50  
 Sakata's New Fragrant Pansy,  
 mixed ..... per ¼ oz. \$4.50

## PANSY in separate colors:—

Cardinal (Trimardeaux), deep red with dark eye “ 1.00  
 Havana Brown, Golden Bronze ..... “ 1.00  
 King of The Blacks (Trimardeaux), large black “ 1.00  
 Light Blue (Trimardeaux) ..... “ 1.00  
 Lord Beaconsfield (Trimardeaux), violet purple,  
 upper petals nearly white ..... “ 1.00  
 Mlle. Irene, Brownish red, yellow centre..... “ 1.00  
 Peacock, blue and purple with white edge.... “ 1.00  
 President Carnot (Trimardeaux), Waved petals,  
 white with dark purple eye ..... “ 1.00  
 Prince Henry (Trimardeaux), rich blue with  
 dark eye ..... “ 1.00  
 Roggli's or Swiss Giants,  
 Harlequin ..... per ¼ oz. \$4.00  
 Roggli's or Swiss Giants,  
 Rheingold ..... per ¼ oz. 2.00  
 Vulcan (Trimardeaux), waved petals, dark  
 brownish red blotched ..... “ 1.00  
 White with eye (Trimardeaux), Creamy white  
 with eye ..... “ 1.00

## PAPAVER (see Poppy)

PEDICULARIS *japonica* ..... “ 2.50

PENTSTEMON *digitalis*, white ..... “ .70  
*glaber*, bright blue ..... “ .80  
*gloxinaeflora*, large-fl., mixed ..... “ 2.50  
*ovatus*, blue ..... “ .75

PHLOX *decussata*, mixed ..... “ 1.25  
*drummondii grandiflora*, mixed ..... “ .25

PHYSALIS *francheti* ..... “ .30

PIROLA *rotundifolia incarnata*.... per ¼ oz. \$ .65

## PLATYCODON

*grandiflora*, mixed ..... “ .35  
*grandiflora*, double-fl., blue ..... “ 1.50  
*grandiflora*, extra early June-fl., white..... “ 1.25  
*grandiflora praecox gigantea*, Mammoth early  
 June-fl., mixed ..... “ 2.00  
*grandiflora praecox gigantea*, Mammoth early  
 June-fl., blue ..... “ 2.00  
*grandiflora nana* (Mariesii), dark blue ..... “ 3.50

## POPPY

*nudicaule*, double mixed ..... “ 1.25  
*nudicaule*, single mixed ..... “ .60  
*nudicaule*, single in colors:—orange-scarlet, or  
 yellow, or white ..... “ 1.00

*Order Early This Year*

---

**FLOWER SEED**

<b>PRIMULA</b>	
auricula, mixed .....	per ½ oz. \$2.00
japonica, mixed .....	per ounce \$1.20
veris .....	per ½ oz. \$1.00
<b>PRUNELLA grandiflora</b> , blue .....	“ .50
<b>PYRETHRUM</b>	
roseum hybridum, double mixed .....	“ 3.00
<b>REHMANNIA angulata</b> (perennial) .....	“ 1.45
<b>RUDBECKIA purpurea</b> (Echinacea), purple-red..	“ 1.20
<b>SALPIGLOSSIS Emperor</b> , Exquisite mixed.....	“ .30
<b>SALVIA argentea</b> , Silver Sage .....	“ .85
farinacea, blue .....	“ 1.10
patens, perennial blue .....	per ½ oz. \$ .75
<b>SCABIOSA caucasica</b> , lilac .....	“ 1.50
perennial japonica, mixed .....	“ .25
<b>SEDUM acre</b> , Golden Moss .....	per ⅛ oz. \$1.00
kantschaticum .....	“ 2.00
<b>SHORTIA soldanelloides</b> .....	per ⅛ oz. \$ .90
<b>SIDALCEA</b> , Rosy Gem .....	“ .75
<b>SILENE</b>	
alpestris, intense white .....	per ½ oz. \$1.25
pendula, mixed .....	“ .25
pendula, rose .....	“ .25
pendula, white .....	“ .25
schafta, magenta .....	“ 1.25
<b>SOLANUM</b>	
pseudo-capsicum, Jerusalem Cherry .....	“ 1.00
<b>SOPHORA flavescens</b> .....	“ .30
<b>STATICE bonduelli</b> , yellow .....	“ .25
superba, rose shades .....	“ .25
<b>STOCKS Ten Week</b> , tall single mixed.....	“ .25
<b>STOKESIA (Cornflower Aster)</b>	
cyanea, blue .....	“ 1.00
cyanea, white .....	“ 1.00
cyanea, mixed .....	“ 1.00
<b>THERMOPSIS caroliniana</b> (Lanceolata) .....	“ 3.00
<b>THUNBERGIA (Black-eyed Susan)</b>	
alata, mixed .....	“ .60
<b>TORENIA fournieri</b> , white .....	“ 1.00
<b>TRICHOSANTHES japonica</b> .....	“ 1.00

---

*Order Early This Year*



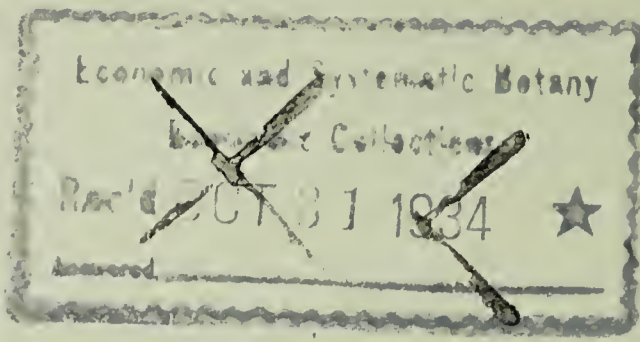
**FLOWER SEED**

<b>TRITOMA (Kniphofia)</b>	
hybrida, in elegant variety .....	per ounce \$2.00
uvaria grandiflora .....	" 1.75
<b>TRICYRTIS hirta</b> .....	" 1.20
<b>VALERIANA (Garden Heliotrope)</b> .. .. .	
coccinea, red .....	" .30
coccinea, white .....	" .30
coccinea, mixed .....	" .30
<b>VERONICA longifolia</b> .....	
pulchella, dwarf, navy blue .....	" .85
repens, early dwarf, white and light blue .....	per 1/4 oz. \$1.00
perennial varieties, mixed .....	" 1.25
<b>VINCA rosea, rose</b> .....	
alba pura, pure white .....	" .25
alba oculata .....	" .25
<b>VIOLA CORNUTA (Tufted Pansy)</b>	
Admiration, large dark blue .....	" 1.00
White Perfection, large white .....	" 1.00
<b>VISCARIA</b>	
cardinalis, bright crimson .....	" .30
dunetti, pink .....	" .30
oculata, mixed .....	" .30
oculata azurea .....	" .30
oculata candida, pure white .....	" .30
oculata, rose .....	" .30
oculata nana compacta, mixed .....	" .50
various sorts mixed .....	" .30
<b>WALLFLOWER, single mixed</b> .....	
single, Cloth of Gold .....	" .25
<b>YUCCA filamentosa, Common Yucca</b> .....	" .40

**GENUINE JAPANESE CYCLAMEN SEED**

	Per 100	Per 1000
Glowing Dark Red .....	\$1.10	\$9.00
Pure Rose .....	1.10	9.00
Pure White .....	1.10	9.00
Pearl of Zehlendorf .....	1.10	9.00
Rose of Zehlendorf .....	1.10	9.00
Rose of Marienthal .....	1.10	9.00
Saffron Red .....	1.20	10.00
Saffron Red, silver edge .....	1.20	10.00
White with Carmine Eye .....	1.10	9.00
Rococo Mixed .....	1.60	14.00
Cherry Ripe .....	1.10	9.00

*Order Early This Year*



**WE ARE CASH BUYERS  
OF THE FOLLOWING SEED**

**ACER dasycarpum**, Silver Maple  
**FAGUS americana**, American Beech  
**HICORIA alba**, Mockernut  
**HICORIA glabra**, Pignut  
**HICORIA ovata**, Shellbark Hickory  
**HICORIA pecan**, Pecan  
**LIQUIDAMBER styraciflua**, Sweetgum  
**LIRIODENDRON tulipifera**, Tulip Poplar  
**NYSSA sylvatica**, Tupelo  
**PINUS echinata**, Shortleaf Pine  
**PINUS taeda**, Loblolly Pine  
**PRUNUS americana**, American Plum  
**PRUNUS serotina**, Black Cherry  
**PRUNUS tomentosum**, Nanking Cherry  
**QUERCUS alba**, White Oak  
**QUERCUS borealis**  
**QUERCUS palustris**, Pin Oak  
**QUERCUS rubra**, Red Oak  
**QUERCUS velutina**, Black Oak  
**ROBINIA pseudoacacia**, Black Locust

*Send samples, advise quantity available and price.  
Quote other kinds also.*